

**Next Sunday
May 8th – Easter 7**

9.30am	Port Melbourne	Rev Hoon You
10.00am	Paul the Apostle South Melbourne	Rev Ross Carter

Lectionary **Intercession - Bible Reading**

Acts	16: 16 - 34	Port Melb: Janet Hoare	Tim Nethercote
Psalms	97		
Revelation	22: 12-14, 16-17, 20-21	South Melb: Anne Richards	Gill Cameron
John	17: 20 - 26		

Parish Contacts

South Port Uniting Church Parish Mission has two congregations: Paul the Apostle, South Melbourne, and Port Melbourne. In addition to individual and joint congregational programs and activities, we provide a range of community outreach programs through South Port UnitingCare.

Paul the Apostle South Melbourne

Rev Ross Carter,
Office: 9690 1188
Mobile: 0407 351 545
Email: ross.carter@southportuniting.org.au

Port Melbourne

Rev Hoon You
Office: 9690 1188
Mobile: 0403 369 781
Email: hoonyou@gmail.com

Church Council:

Chairperson: Tim Nethercote
Email: nethers@netspace.net.au
Secretary: Janet Hoare - Tel: 9314 1010
Email: janet.hoare@southportuniting.org.au

South Port UnitingCare

CEO : Dianne Embry
Mobile: 0423 204 573
Email: dianne.embry@southportuniting.org.au
Office: South Port Uniting Church and South Port UnitingCare
 317-329 Dorcas St, South Melbourne 3205.
Hours: Monday to Friday 9am-5pm
Phone: 9690 1188 **Fax:** 9690 2847
Office email to reception/ administration: info@southportuniting.org.au
<https://www.facebook.com/southportuc/>
<https://twitter.com/southportuc>
<https://www.instagram.com/southportuc/>

South Port Uniting Church Web Site: www.spuc.org.au

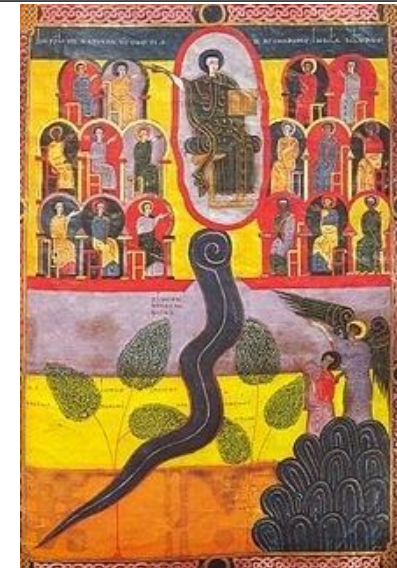
Copyright: Words of songs used in Church are reproduced under 'CCCL213372'.



The Uniting Church in Australia
 South Port Uniting Church
 Parish Mission
 Congregations

**Paul the Apostle South Melbourne
Port Melbourne**

**Easter 6
Sunday 1st May 2016**



New Jerusalem Icon

Diary for the coming Week

Monday 2nd May
 7.30 pm **South Port Singers**, Paul the Apostle church

Thursday 5th May
 11.00 am **Friendship Club** - Parish Mission Centre, South Melb

A warm welcome to all and particularly those who are visitors.
 Please join us for morning tea after the service.

**NEWS
and
NOTES**

Coming Events & Items of Interest

Worship Theme at Paul the Apostle

Where to the church? We spend an enormous amount of time and energy thinking about the church. Bureaucracies at state, regional, and local levels are constantly 'managing' the church in the terms of the latest organizational techniques. We are desperate to get more people into our churches and will try any vaguely promising 'hook', to get them in. The New Testament concludes, however, with the vision of a city that does not have a church. This is a vision that collapses the distinction between the sacred and the profane and, therefore, does away with religion. If this city has come upon the world in Jesus Christ what could this mean for our Christian communities? This will be our theme at worship at Paul the Apostle.

Annual meeting. The annual meeting will be held at the South Melbourne church, 11.30 am, Sunday 29th May. The meeting will be followed by a light lunch.

Today's Lectionary

Acts	16: 9 - 15	Revelation	21: 10, 22 - 22: 5
Psalms	67	John	14: 23 - 29 or 5: 1 - 9

Coming Events & Items of Interest

Simply Living Community Garden

Coming up in the garden:

Grow & Eat, Wednesday 4th May, 1.30 – 3.00 pm.
Social cooking using produce from the community garden, cost \$2, all welcome.

Jam making, after the success of our lilly pilly jam making on 20th April we are planning another session sometime in the next few weeks.
If you are interested in joining in please contact Janet.

Reminder: Deadline for News and Notes articles is 9am Thursday.